



**NCCA**

An Chomhairle Náisiúnta  
Curaclaim agus Measúnachta  
National Council for  
Curriculum and Assessment

# Junior Cycle Visual Art Classroom-Based Assessment 2: From Process to Realisation Example of Student Work 03

July 2022

# Junior Cycle Visual Art: CBA 2

## Example of Student Work 03

---

**Strand:** Art

**Theme:** Contrasts

### Learning outcomes:

#### CRAFT Students should be able to:

- 2.3 reflect on their own, or another's, craftwork through the use of critical and visual language.
- 2.4 show they can use their drawings to observe, record and analyse.
- 2.5 develop their ideas for craftwork through drawing.
- 2.11 research the use of art elements and design principles in historical and contemporary craftwork from their own and other cultures.
- 2.15 justify the choice of media in their own or others' craftwork.

#### ART Students should be able to:

- 1.3 critique an artwork using critical and visual language.
- 1.4 demonstrate how they use drawing to observe, record and analyse the human figure and the world around them.
- 1.6 use drawings to communicate their personal outlook or understanding.
- 1.8 discuss examples of historical and contemporary visual art.
- 1.15 critique the choice of media in their own or others' artwork.

### Task

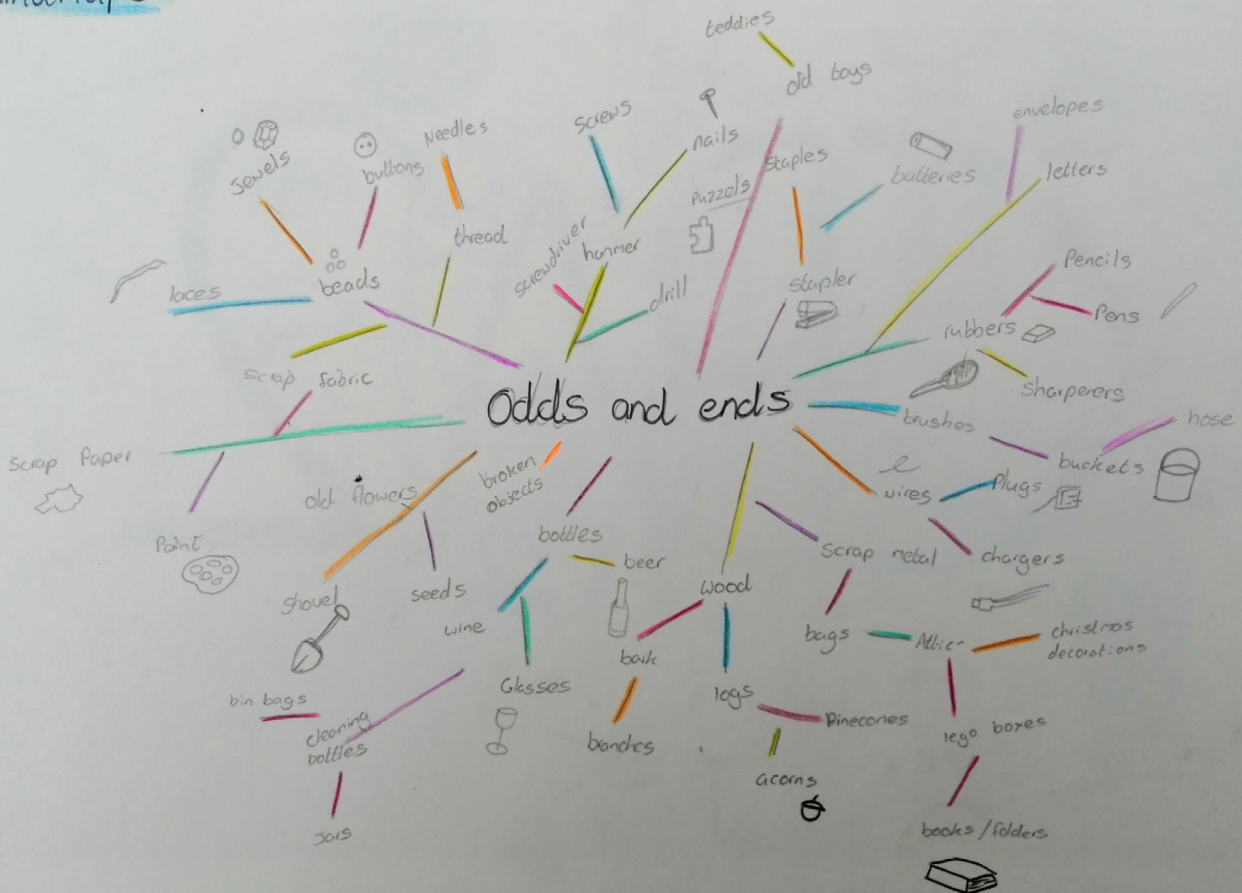
Students researched and explored the CBA2 themes using a variety of media.

### Background

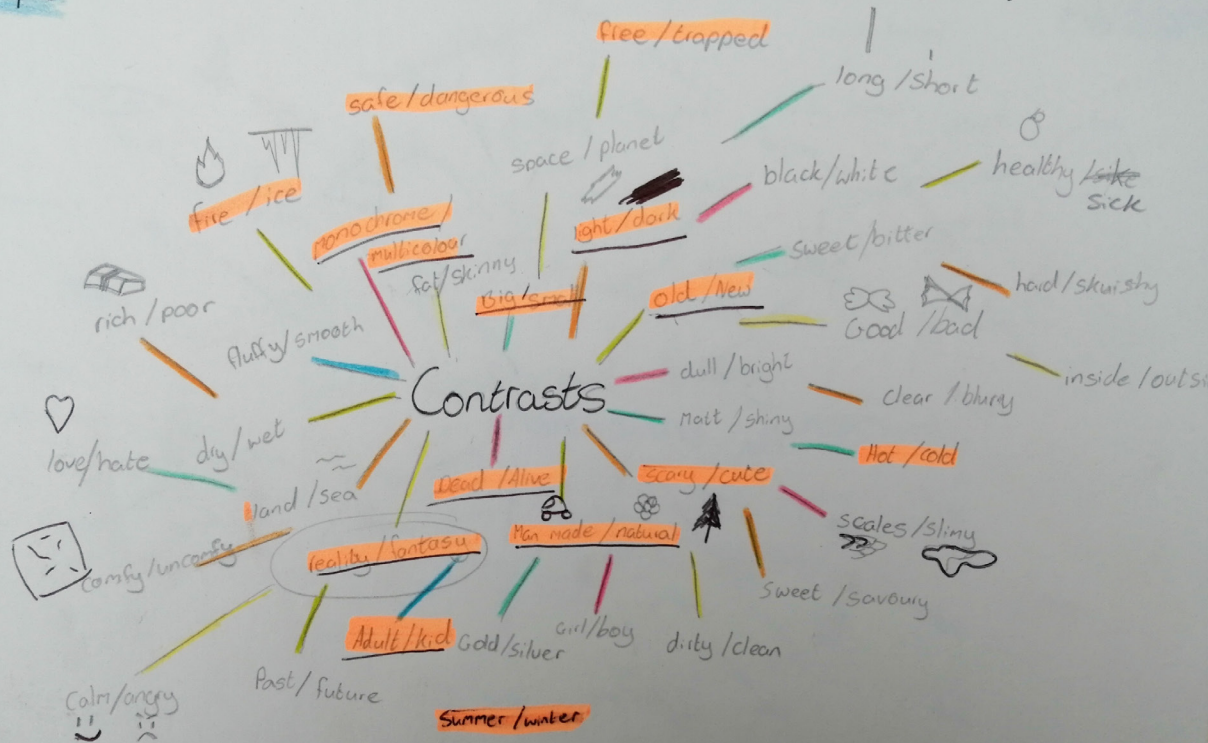
Students had completed the Design Strand in CBA1. For CBA2, the students were exploring, researching and experimenting within the Art and Craft strands. The students chose primary sources that related to their chosen themes and explored their ideas using a variety of media, techniques and research. They presented their work to the class and engaged in and recorded the peer feedback they received. This feedback will further aid the development of the ideas for the work involved in the final assessment.

# CBA2

## Mindmaps



# Mindmaps



# Mindmaps



idmaps



Primary sources

Contrast

flowers

leaves

vines

random things

branch

portal

chain

crystal

stones

Why I choose this theme

The theme I picked is contrast. I chose this theme because it is very broad and I wanted to do more of a fantasy piece of art.

old vs new

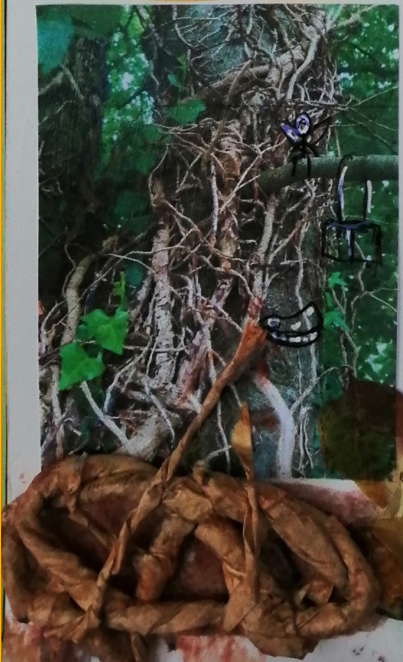
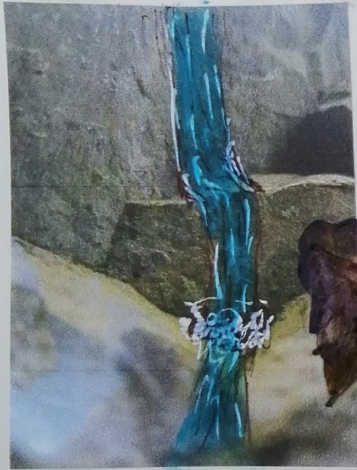
manmade vs natural

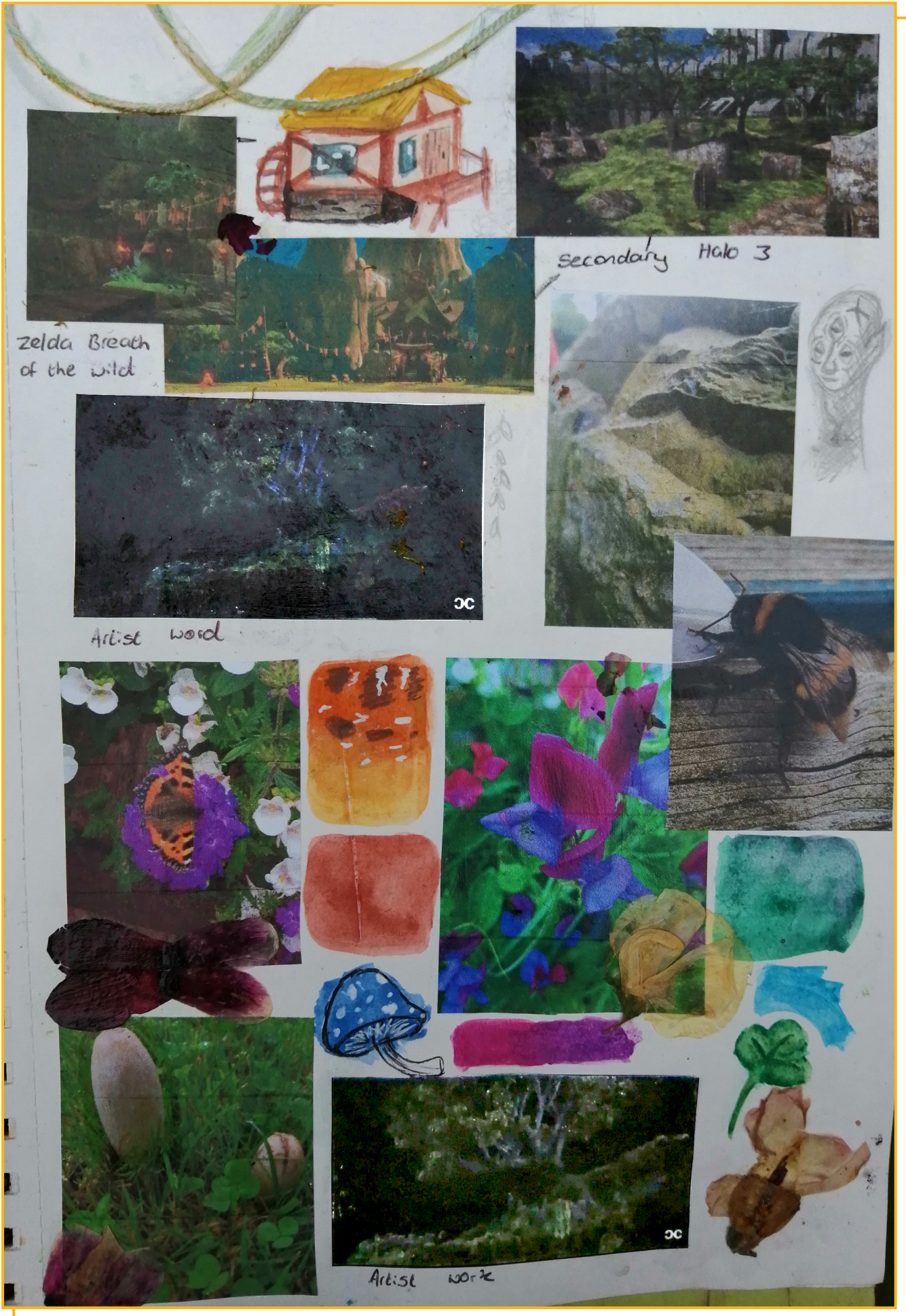
reality vs fantasy

big vs small

past vs future

I Took photos of natural things around my house

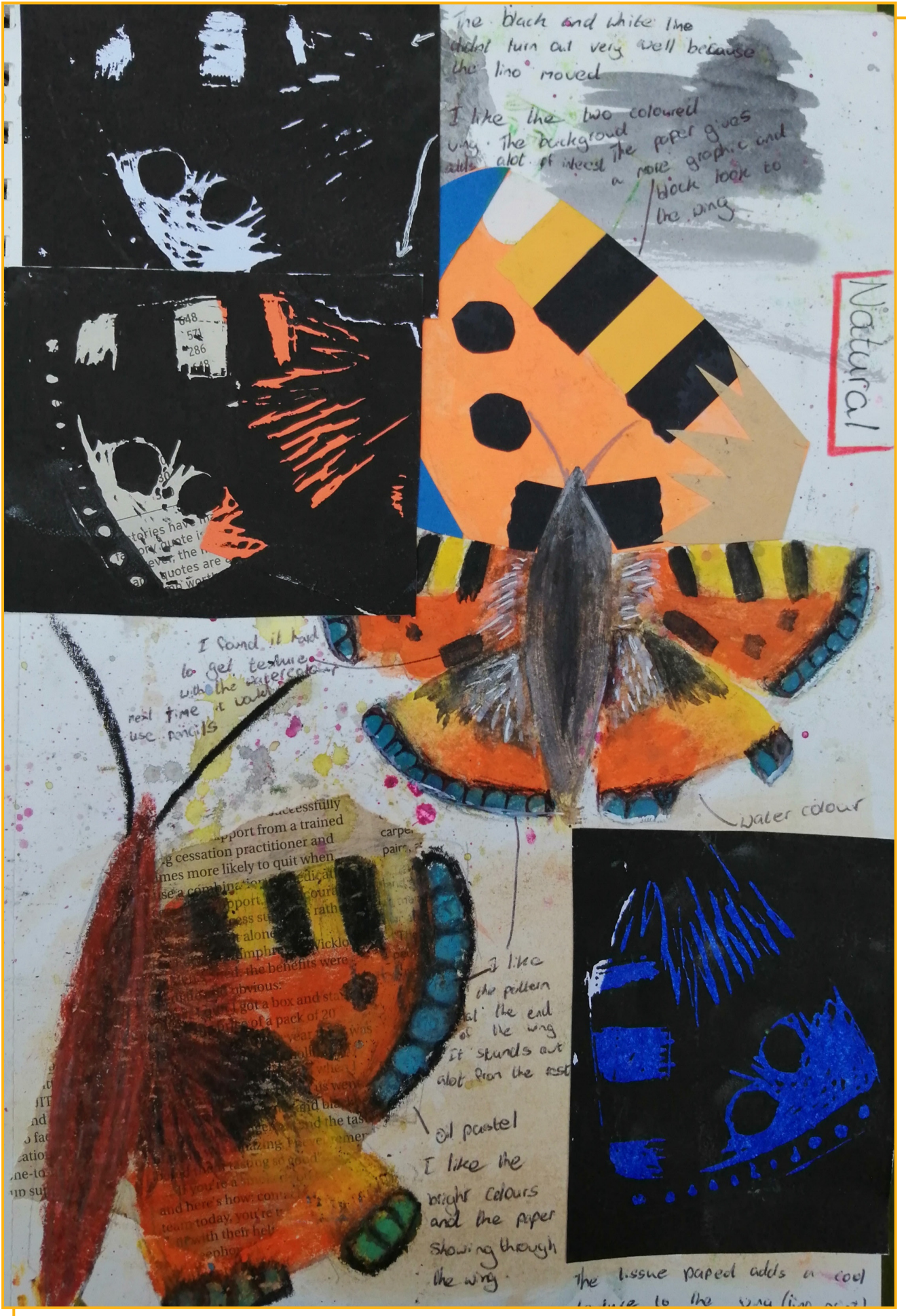








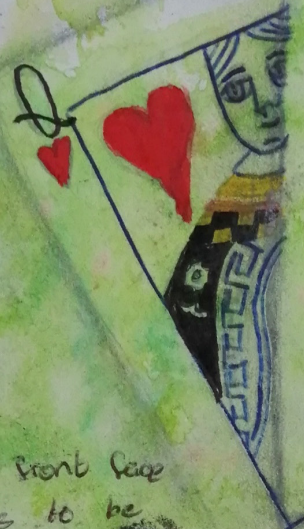
TEACHER ANNOTATION: The student explored the theme through a variety of primary sources and a range of media. Starting with observational drawing, the work developed with confidence as the student used a variety of media, demonstrating they had experimented with techniques and skills.



Games for adults & children

I like the use of line and pattern  
watercolour in the background

Marker + watercolour



The front face  
needs to be  
smaller on  
the die

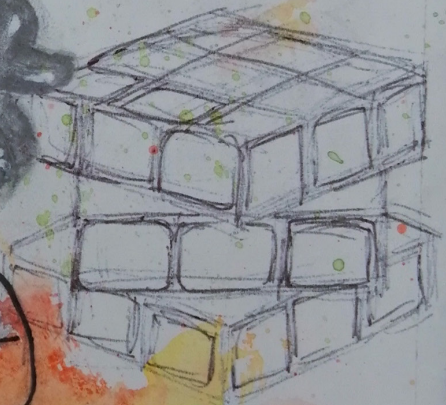
card games



monopoly pieces



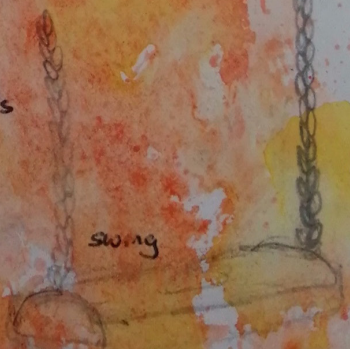
rubix cube



I like the contrast of the  
Poker chips white symbols



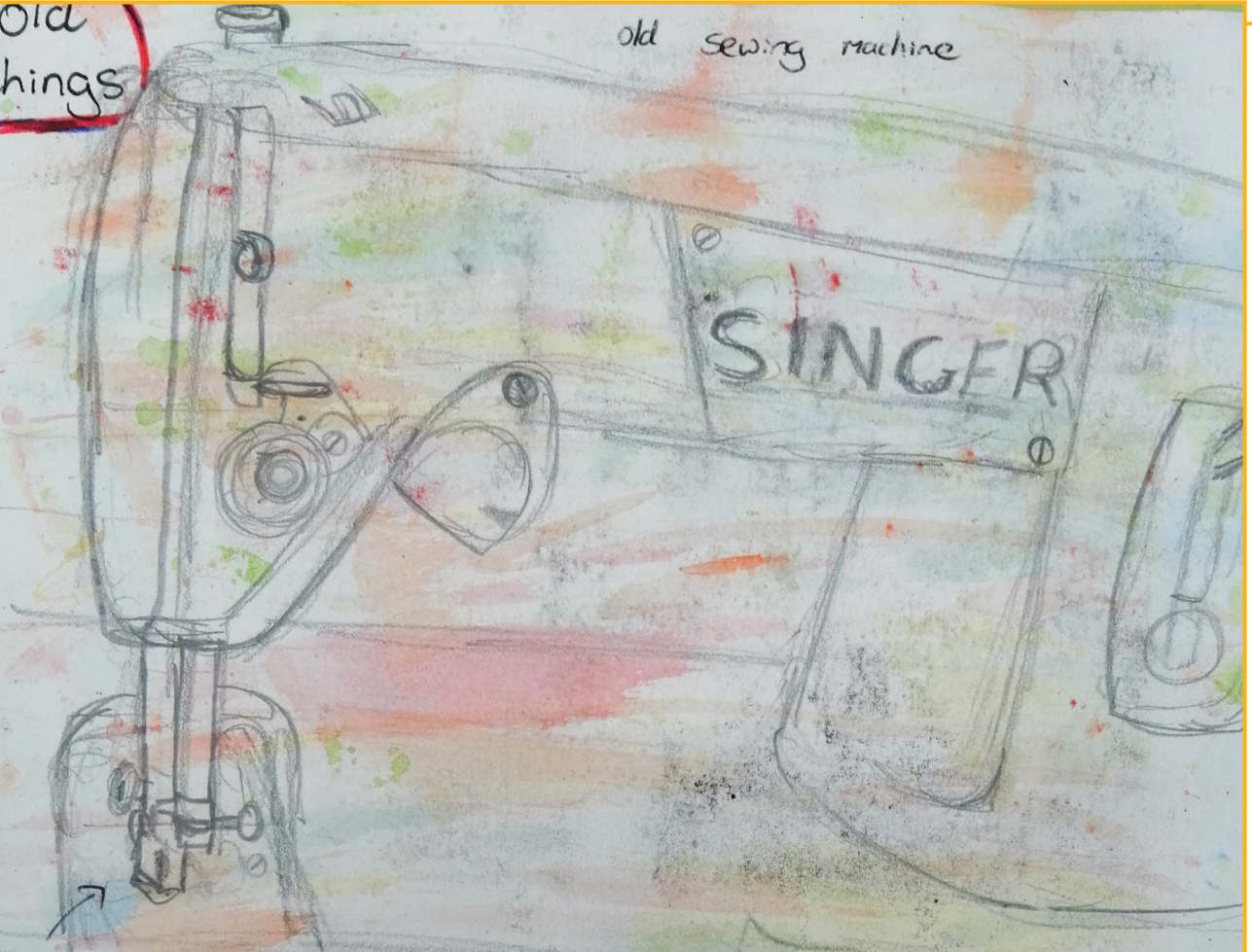
swing



I was looking at games adults and children play.  
Some contrast and some are similar

Old things

old sewing machine



I like the mechanisms on the sewing machine

thread

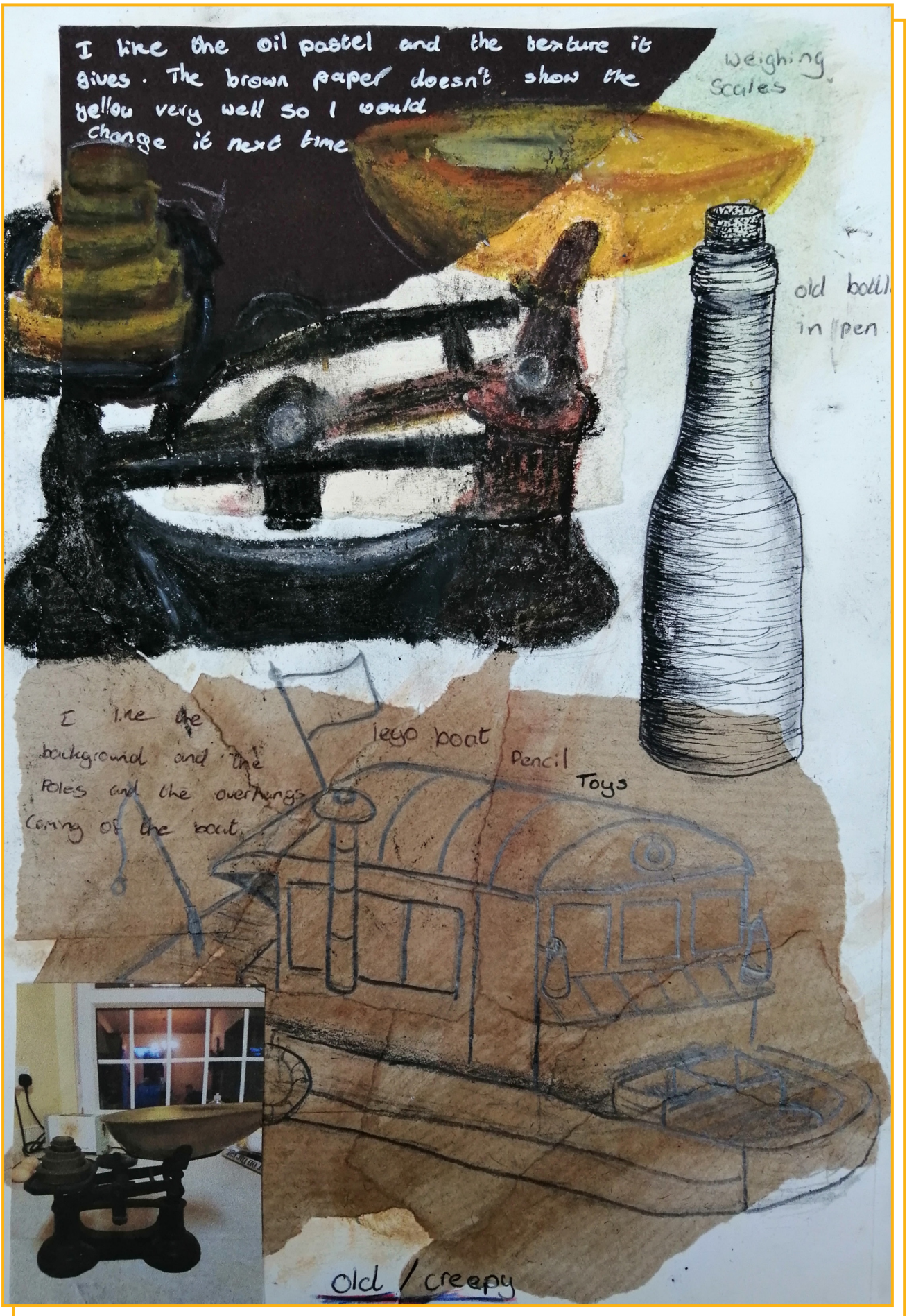
I like all the different angles of sweet pea the flowers and the colour in the background



old shed door



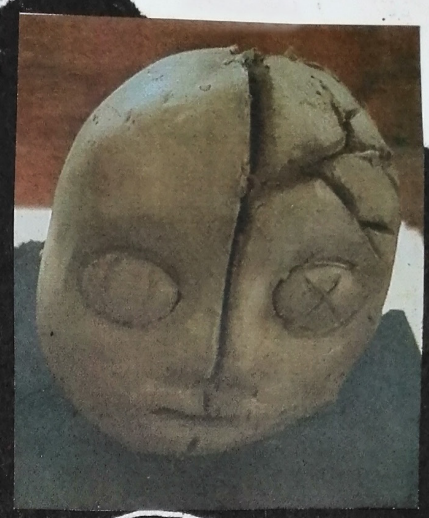
I think the door would be better in colour to show the Peeling Paint more



**TEACHER ANNOTATION:** The student shows good attention to detail in their observational and tonal drawings relating to their primary sources. Their colour studies also demonstrate confidence in using a variety of media, skills and techniques relating to each specific medium. The student evaluated their work as they progressed through the artistic process through visual and written annotations.

Old doll

Half normal  
Half broken



I like the highlights on the bottle. It makes it look 3D

d  
ottle  
colour

watercolour



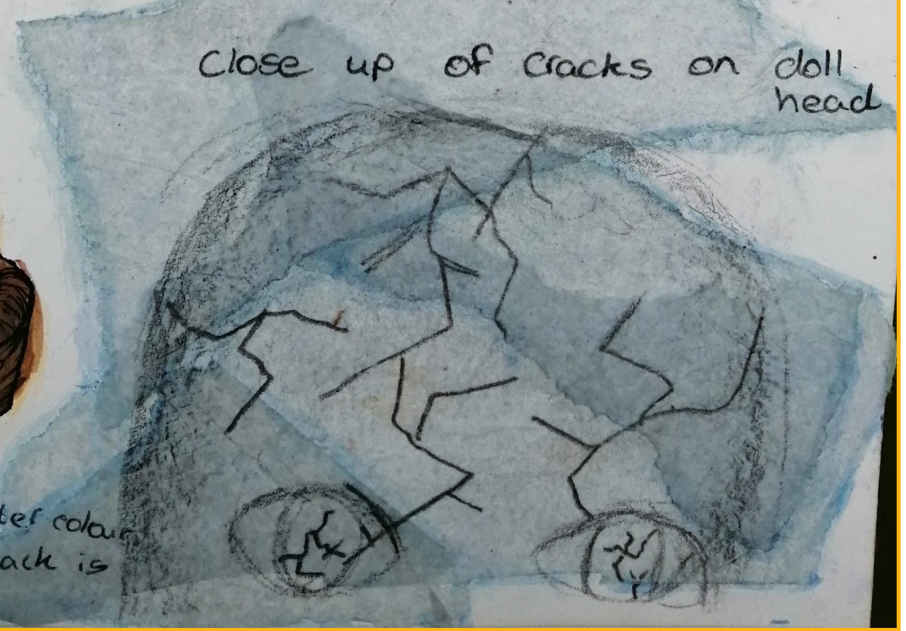
I like the cracks on the face and the

Weights for half black half white  
Scale

imaginative version of doll



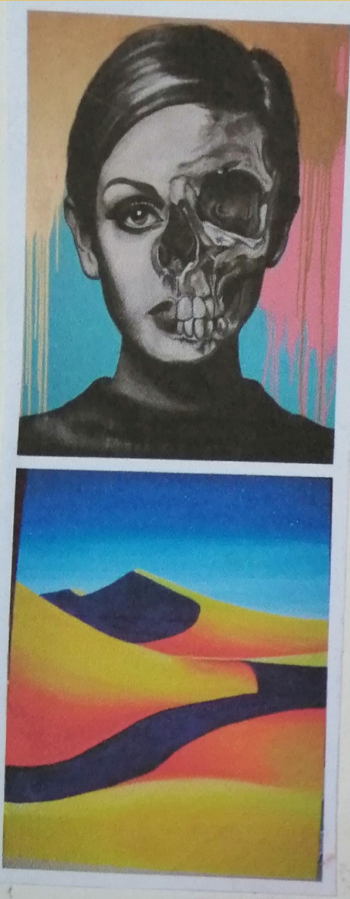
Close up of cracks on doll head



Watercolour + pen

I don't like the water colour + pen. I think the black is too much

Artist work



~~Carlin~~ ~~Binkhorst~~  
Ant Carver

contrast  
background colour  
Person black + white

Death vs life



Movement

Paint dripping



colour



Warm Pink gold  
cold blue

I like the skull taking over the face and the contrast against the background

Emphasis on the person

shape

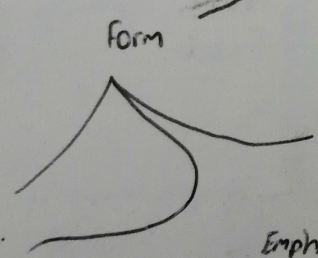


teeth

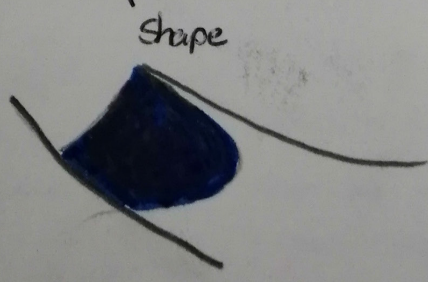
Artist's work

Caitlin Binkhoist  
Contrast

I like how simple the shapes and colours are but how eye catching it is the work is



Emphasis on the shadows



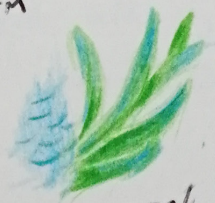
TEACHER ANNOTATION: The student's research shows a fair variety, analysis and appreciation of visual culture.



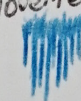
Artistic work

~~Martine~~  
Huang Tuft

shape + form



Movement



colour



colours

warm

cool



I love the  
colourful fantasy like  
plants growing on the  
head

complimentary



The bright plants  
contrast against the  
neutral skin

Artist work

Nerdforge  
Martina

Reality vs Fantasy

Movement of  
the water flowing  
down into the lake

Top of  
tower



colours

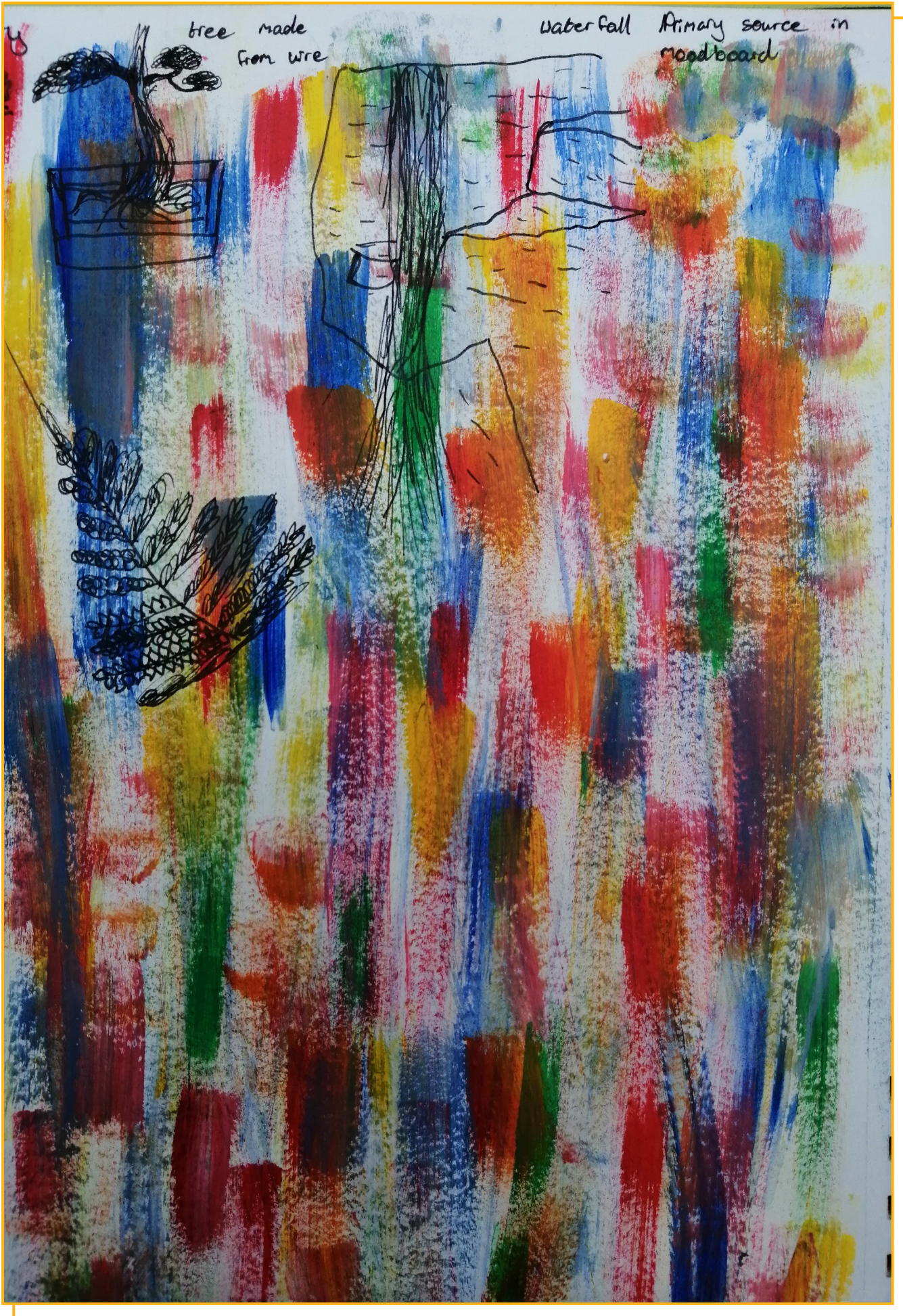


The green & blue help  
break up the all gray  
tower

Form + shape



I like all the small  
details in the bricks/  
tower and the moss making  
it look overgrown



Old vs new

New torch

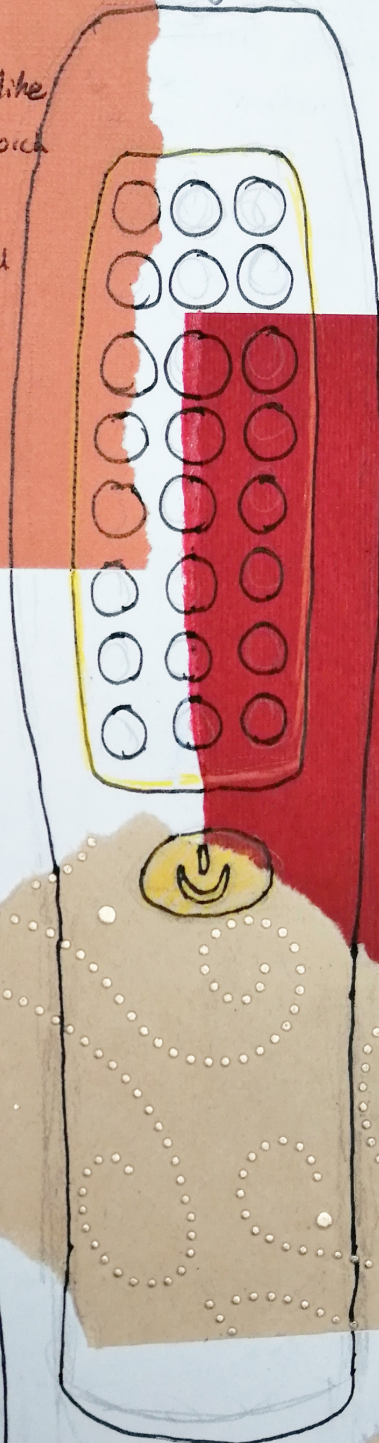
Inky pen

I don't like  
the new torch  
because its  
to flat and  
plain.

I would use  
a light that  
was more 3D

oil  
lamp

inky  
pen



I like the paper  
in the background  
and the detail  
in the oil lamp

Ideas

Painting  
old weighing scales  
Baking ingredients

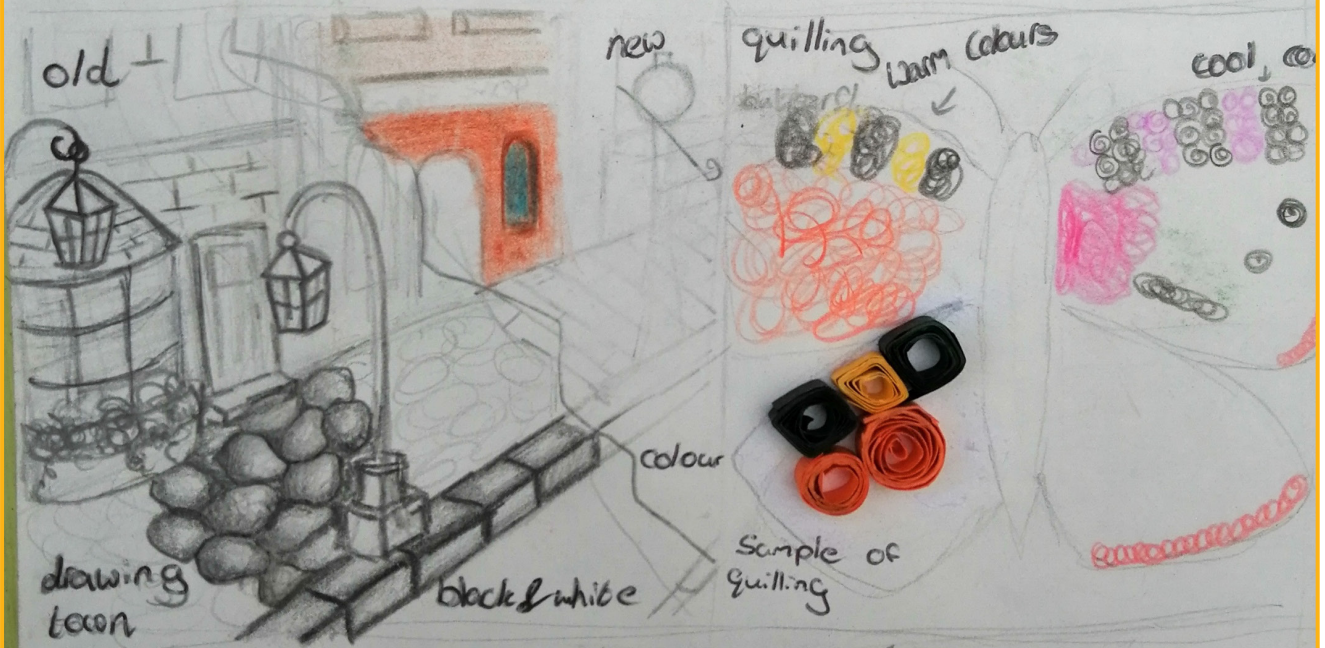


old

new

quilling Warm Colours

cool

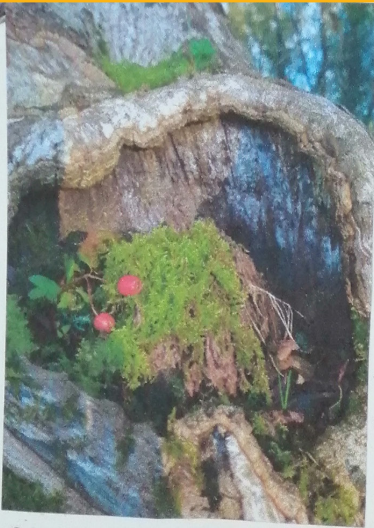


3D diorama  
Shrine  
secondary

Tree in my  
Garden

Primary





Inspiration  
← for my drawing

I love the  
Pop of red from  
the berries and  
the light from the windows  
House in a tree stump

Water colour +  
colouring pencil

Primary source  
Tree stump in Seild



Acrylic paint

Throne

I think a warmer  
brown would be  
better and I would  
add detail to the  
wood to make it look  
carved / handmade



TEACHER ANNOTATION: Reflection was evident throughout this process, however, at times the student could have returned to some of their work for further experimentation.

games falling out of a box



3D sculpture of building 1 model



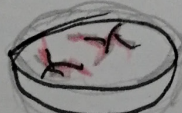
I liked working with the clay and adding the details to the building

Pottery



doll head

head head inside

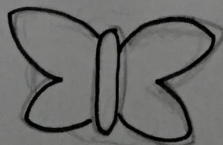
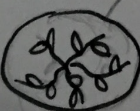


blood + cracked



Pot with a butterfly lid lid

vines growing out of middle



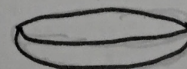
lid



handle textured to look like wood

needle / pin

patch work design

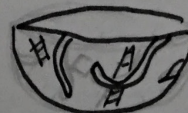


gray

wood with moss



feel outside complimentary colours teal + green



snakes & bolders design



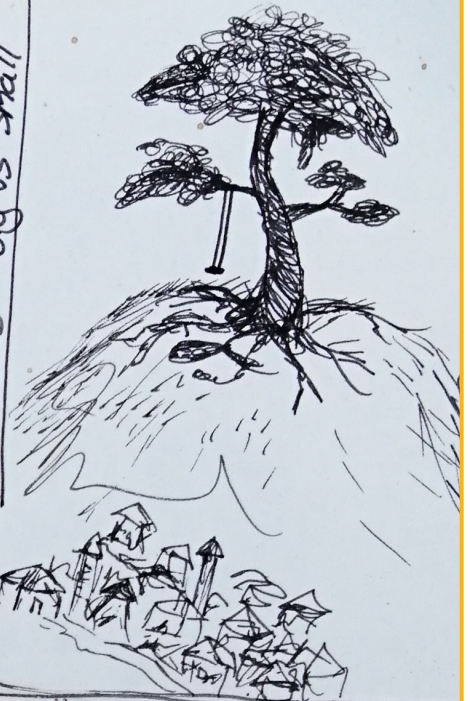
vase

Mushrooms + plants

TEACHER ANNOTATION: The student identified the strengths in their drawings and used these to create designs, concepts, and forms for experimenting with drawn compositions, trial clay sculptures and trial lino prints. They have also formulated some ideas of how their work might progress.



real mushroom



contrast Big vs small

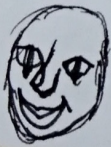
Contrasting

using my imagination

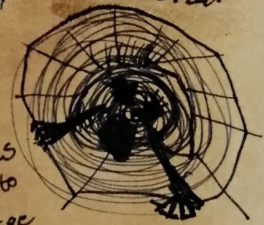
Fantasy  
Mushroom house

I love the  
scribble pupil eye  
of the eye person

Imagination



portal



hands  
trying to  
escape



island

sun  
exploding

clouds

heats  
dripping

clypeus

Different flowers  
for planets  
flower  
planets





## Teacher annotations using the success criteria

The annotations capture observations by the teacher, using the features of quality, with a view to establishing the level of achievement this work reflects. The annotations and judgments were confirmed by a Quality Assurance group, consisting of practising teachers and representatives of the NCCA, the Inspectorate, the State Exams Commission and the Junior Cycle for Teachers support service.

### Teacher annotations

This is a purposeful and personal response to the chosen theme by the student. Their starting point was investigating the theme of “Contrasts”, including man-made and natural objects and the world around them. The student explored the theme through a variety of primary sources and a range of media. Starting with observational drawing, the work developed with confidence as the student used a variety of media, demonstrating they had experimented with techniques and skills.

The student shows good attention to detail in their observational and tonal drawings relating to their primary sources. Their colour studies also demonstrate confidence in using a variety of media, skills and techniques relating to each specific medium. The student evaluated their work as they progressed through the artistic process through visual and written annotations.

The student’s research shows a fair variety, analysis and appreciation of visual culture.

There is good evidence of the elements of Visual Art in the students’ work.

Reflection was evident throughout this process, however, at times the student could have returned to some of their work for further experimentation.

The student identified the strengths in their drawings and used these to create designs, concepts, and forms for experimenting with drawn compositions, trial clay sculptures and trial lino prints. They have also formulated some ideas as to how their work might progress.

The student used critical and visual language to describe their work in the class presentation and recorded the peer feedback they received, which will aid their development of ideas for the final assessment.

Overall, the work depicts a good standard of skills and techniques relating to the chosen theme and the use of the moodboard shows additional primary sources, techniques and creative responses to their chosen theme.

**Overall judgement:**  **Above expectations**