



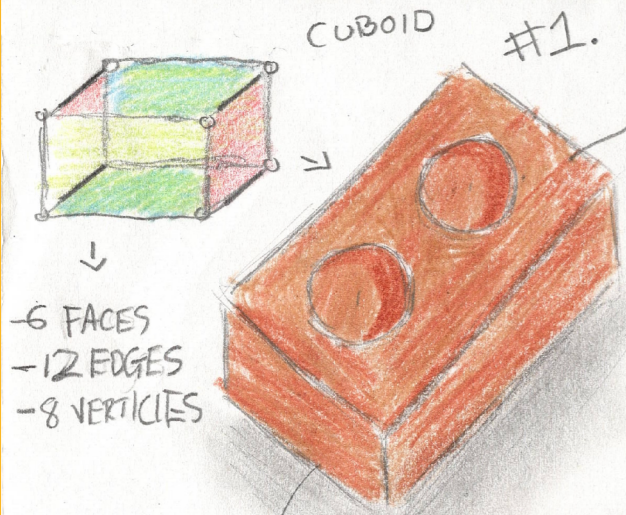
NCCA

An Chomhairle Náisiúnta
Curaclaim agus Measúnachta
National Council for
Curriculum and Assessment

Junior Cycle Graphics Classroom-Based Assessment 2: Example of Student Work 01

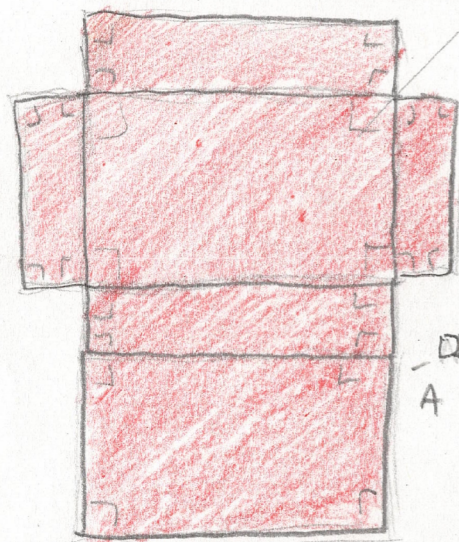
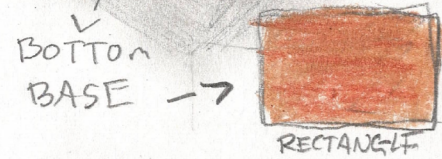
January 2024

GEOMETRY OF CANDLE HOLDERS



MATERIAL: WOOD

- A CUBOID IS FORMED FROM EXTRUDING A RECTANGLE

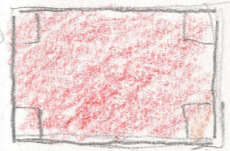


DEVELOPMENT OF A CUBOID

OPENINGS INSIDE FOR CANDLES



RECTANGLE



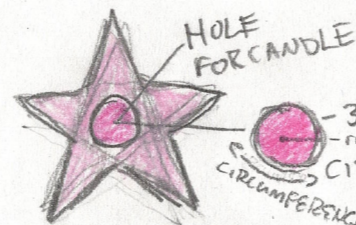
RECTANGLE

TOP VIEW



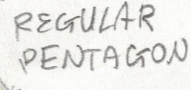
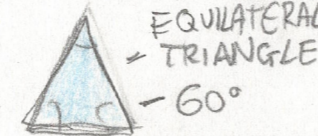
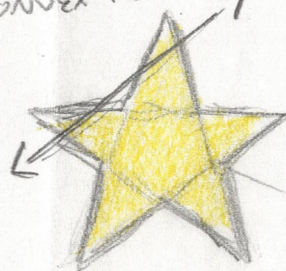
HOLES FOR CANDLES

TRUNCATED CONE

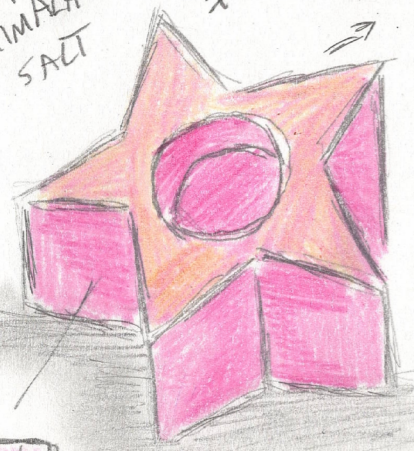


NON CONVEX POLYGON LINE INTERSECTS MORE THAN TWO TIMES

- A STAR SHAPE IS A TYPE OF NON CONVEX POLYGON



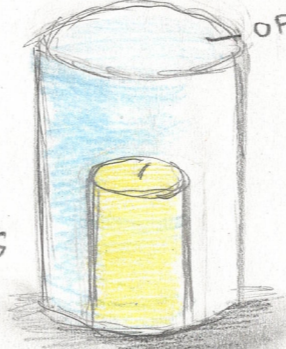
MATERIAL: HIMALAYAN SALT



SQUARE - 90°

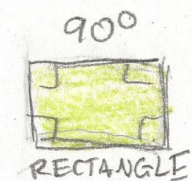
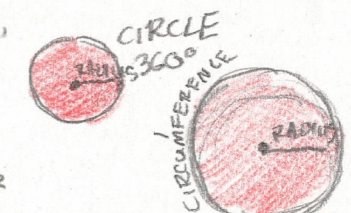
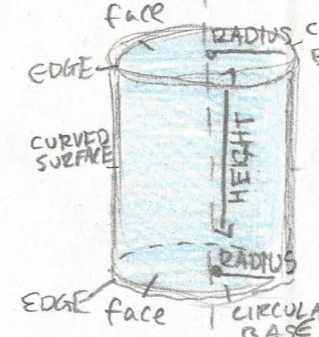
- A CYLINDER IS FORMED BY EXTRUDING A CIRCLE

MATERIAL: GLASS



CYLINDER - HAS 2 IDENTICAL CIRCULAR BASES THAT ARE PARALLEL AND CONGRUENT

- HAS 2 CURVED EDGES, 1 CURVED SURFACE AND 2 FLAT FACES.



RECTANGLE

MATERIAL: WOOD



TOP VIEW

CONCENTRIC CIRCLE

CIRCULAR OPENING FOR CANDLE



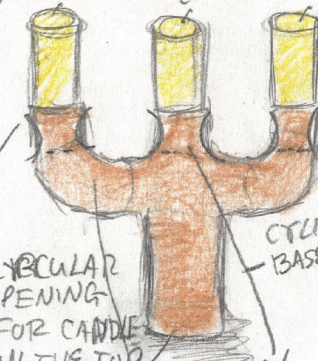
CIRCLE 360°

DEVELOPMENT OF A CYLINDER



MATERIAL: PORCELAIN

#5

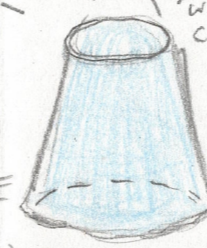


CIRCULAR SHAPED BASE

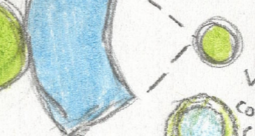
CIRCULAR OPENING FOR CANDLE ON THE TOP

CYLINDER-SHAPED BASE

(A TRUNCATED CONE IS A CONE WITH THE APPEX CUT OFF)



DEVELOPMENT OF A TRUNCATED CONE



CIRCLE

360°

CIRCUMFERENCE

RADIUS

CIRCULAR BASE

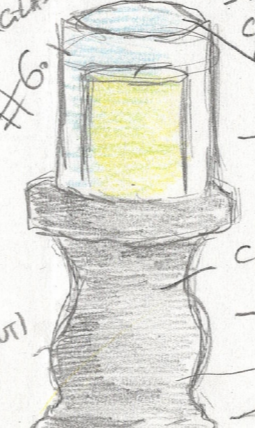
CONCAVE SURFACE (A CONCAVE IS A SURFACE OR A LINE THAT IS BOWED INWARD)

VAULTED PROFILE

MATERIAL CEMENT + GLASS

OPENING FOR CANDLE

CYLINDER



CONCAVE SURFACE

SPHERE

CIRCULAR BASE

360°

CIRCUMFERENCE

CBA Review

For the research I did in the CBA, I observed pictures of several types of candle holders and the basic shapes that I would see in them. I learned about the basic geometry that can be found in everyday objects in my previous Graphics classes, and that had helped me to identify the geometry in the candle holders. I also looked at the geometry of basic shapes on Google to help me with my research. I had also observed Different candle holders at my house as a guide to the drawings/ geometry.

Teacher annotations using the Features of Quality

The annotations capture observations by the teacher, using the features of quality, with a view to establishing the level of achievement this work reflects. The annotations and judgments were confirmed by a Quality Assurance group, consisting of practising teachers and representatives of the NCCA, the Inspectorate, the State Examinations Commission and the Oide support service.

Teacher annotations

Research and analysis:

The research method chosen demonstrated a comparison of a range of sources which led to the production of a comprehensive and detailed analysis of the data/findings.

Exploring concepts:

The response demonstrated a comprehensive understanding of a range of concepts in relation to the domain. This was evidenced through the sketching of relevant 2D and 3D geometry, complimented by detailed and appropriate annotations.

Graphical presentation:

The presentation of the findings was of an excellent standard, using well proportioned rendered sketches and annotations on a well organised A3 sheet. This allowed for a critical consideration of what information best communicated the Classroom-Based Assessment.

Overall judgement:  Exceptional

 Exceptional  Above expectations  In line with expectations  Yet to meet expectations